

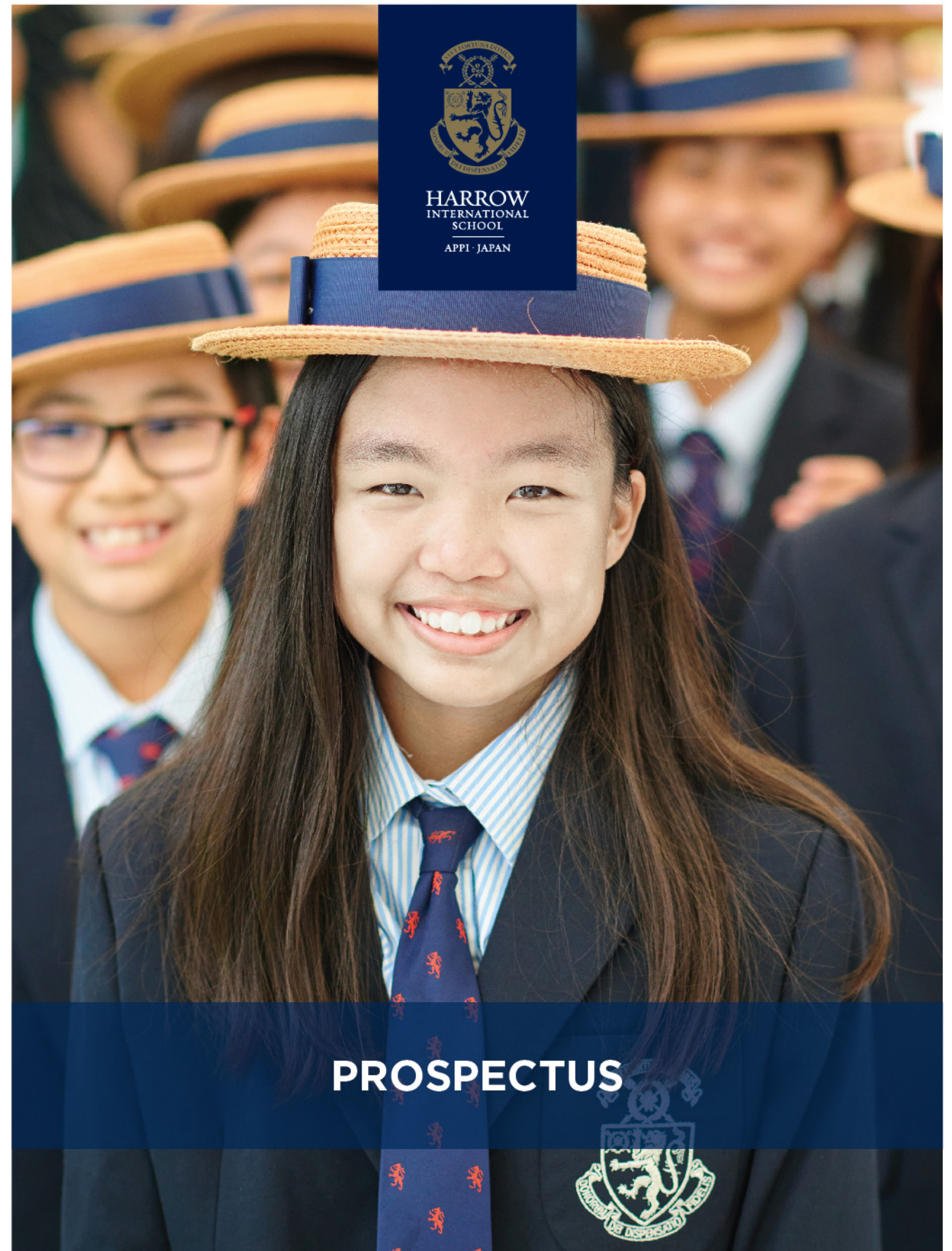
Educational Excellence *for* Life and Leadership

Harrow Appi

180-8 Appikogen, Hachimantai City, Iwate Prefecture, Japan

🌐 harrowappi.jp

✉ info@harrowappi.jp



HARROW
INTERNATIONAL
SCHOOL
—
APPI · JAPAN

PROSPECTUS



Educational Excellence *for* Life and Leadership

OPENING IN AUTUMN 2022 Harrow International School Appi



Set amongst the mountain scenery of Appi Kogen, Harrow International's first school in Japan enjoys a stunning location – one where world-class education meets Japanese beauty.

Surrounded by nature, high achievers excel both academically and socially. Following a British curriculum, students have access to the world's best universities. An extraordinary co-curricular programme sees students engaged in sports, creative and outdoor pursuits, including: skiing, snowboarding, tennis, golfing, mountaineering and mountain biking.

With the highest standards of pastoral care alongside a commitment to educational excellence for life and leadership, students are provided with an outstanding fully residential education. The safety of the Appi environment and the healthy lifestyles that mountain living promotes, ensure that students blossom into successful young adults.

Harrow International School Appi caters for students aged 11 to 18 (Year 7 to 13) and, as a full boarding school, closely mirrors the experience of studying in Harrow School in the UK. At capacity, the school can accommodate 920 boarders. Students from a vast range of countries thrive in state-of-the-art and comfortable boarding houses. Occupying an area of 90,000 sqm and enjoying a floor space of 24,000 sqm, Harrow International School Appi is one of the largest boarding schools in Japan.

Harrow International School Appi sets the benchmark for international education in the region, offering a one-of-a-kind learning experience for students from around the world.



Outdoor Learning In Rich Nature

Situated in the stunning environment of Appi Kogen, the school benefits from direct access to nature: pollution-free air, star filled nights, and a clean healthy environment. The biggest ski resort in Japan, a 36-hole golf course, and 18 tennis courts are all readily available for student access.

Against such a backdrop and with such facilities on their doorstep, students are inspired and motivated to do more, and to be more, than they ever thought possible.

Mirroring the edge-of-city setting of Harrow School in the UK, the school's unique location provides the opportunity for challenge and for quiet reflection. Whether hiking in the hills or gazing out of a boarding house window, students are connected with, and learn through, nature.

As future leaders, our students develop a profound connection to the environment and to its protection – they become leaders for tomorrow's world.



Welcome to Harrow Appi

Mel Mrowiec **Chairman, Harrow International Schools Limited**

In the same year Harrow School celebrates its 450th anniversary, I am delighted that in 2022 we will open our first school in Japan – Harrow International School, Appi.

For over two decades, schools bearing the Harrow name have blended elements of the philosophy, practice and traditions of Harrow School in the UK, with the needs of their unique communities, becoming distinctive international schools.

Set in a stunning physical location, Harrow Appi will offer a full boarding experience for 920 students ages 11–18. You will find a focus on academic achievement and ambition, culminating in entry to top universities worldwide. Effective pastoral care and a strong House system will be the heart of the school. An exciting co-curricular programme, will include skiing, snowboarding, golf, and mountain biking, enriching and enhancing students' lives.

On behalf of Harrow International School Limited, we look forward to welcoming you to the Harrow Appi community.

John Batting **Chair of Governors, Harrow School in the UK**

On behalf of the Governors of Harrow School in the UK, I would like to send my best wishes for a safe and successful construction of the magnificent Harrow International School to be built in a very special place in the wonderful location in Appi Kogen in Japan.

I was delighted to witness the ground-breaking ceremony with many fond memories of warmth and friendship from so many local people I have met there. I am so very thankful for their incredible support.

Harrow International School Appi Japan will be the seventh international school we open in Asia. Being the first in Japan, it is also very special with an extraordinary extracurriculum that stretches out to the picturesque nature where the school site is located. It will be a school that would support students to explore beyond academic excellence.

I look forward to visiting Harrow International School Appi soon when it opens in 2022.



Educational Excellence for Life and Leadership



Drawing on the 450-year heritage of Harrow School in the UK, our educational ethos is based on four values: courage, honour, humility and fellowship.

Through these values, Harrow School has produced world famous leaders and renowned thinkers. Amongst the School's alumni are some of the most influential figures in world history, including Lord Byron, Winston Churchill, Jawaharlal Nehru, King Hussein, Lord Rayleigh and numerous influencers, inventors, artists and Nobel Laureates.

The spirit of these exceptional individuals echoes in everything we do; the development of leadership attributes shapes the attitudes and behaviours of our students. Individualised care and support ensures that every student maximises their potential.

Our holistic approach is underpinned by the House system. Modelled on the traditions of Harrow School in the UK, the Houses offer students a smaller, closer community within the school, broadening the range of activities and support available. A key strength of the House system is the vertical integration of different year groups. This creates a 'family' unit within which responsibilities are assigned to older students to care for and support their younger peers.

Our respect for tradition is balanced by innovation.

We are forward-looking and rise to the challenge of creating new, unique educational offerings. Our progressive teaching methodologies and distinctive curricula are bespoke for each of our schools. A strong commitment to teacher training place us at the forefront of educational excellence.

Combined, our approach nurtures well-rounded and successful students, with the skills and strength of character to excel in a rapidly changing world. We encourage every one of our graduates to demonstrate leadership in all of their endeavours; as life-long learners they are prepared for high-achieving futures and for service to their communities.

Our graduates are well equipped to become tomorrow's leaders.

Our Purpose and Values

To prepare students with diverse backgrounds and abilities for a life of learning, leadership, service and personal fulfilment, who rely on their strength of character, formed in large measure by the forward-looking Harrow-branded education, to adapt to and excel in a rapidly changing world.

This purpose is realised through Harrow School's Core Values, embraced by all Harrow-branded schools in Asia including Thailand, China, Hong Kong SAR and Japan:

Courage

Encouraging innovation and risk-taking, inspiring change for the better; challenging adversity and complacency; making the most of opportunities; putting fear of failure to one side and staying the course, even when it is difficult.

Honour

Doing the right thing, having the highest standards and leading by example; taking responsibility and being worthy of the trust of others.

Humility

Recognising that one's self is a work in progress and that struggling with one's weaknesses is essential to growth; recognising that talent and achievement alone, however impressive, are not sufficient to success as a human being.

Fellowship

Building binding, constructive relationships which make a positive contribution. This is resonant with our belief that the strongest relationships of all are based on faith, hope and love.



Leadership Attributes

To fulfil our purpose, leadership attributes are instilled, age appropriately, in all students. We ask them to focus on:

Making a positive contribution to community -

so as to demonstrate consideration for the needs of others, build constructive and effective relationships and take responsibility for the reputation of the school and its community.

Applying knowledge with compassion -

so as to respond emotionally and intelligently to others and the environment, treat others with tolerance, respect and consideration, and understand the importance of service.

Solving problems collaboratively -

so as to work constructively with other team members towards a common goal, respect the opinions of others, communicate effectively and promote good morale.

Solving problems creatively -

so as to work with others to generate innovative ideas, meet one's own development needs, actively seek new ideas and opportunities and maintain momentum when problem-solving.

Making just and responsible choices -

so as to be receptive to alternative perspectives, adhere consistently to ethical principles and use knowledge of right from wrong as a moral compass.

Facing challenges with determination -

so as to be able to cope with change, adapt effectively to unfamiliar challenges, learn from successes and failures and develop resilience when facing difficulties.



Our Past, Your Children's Future



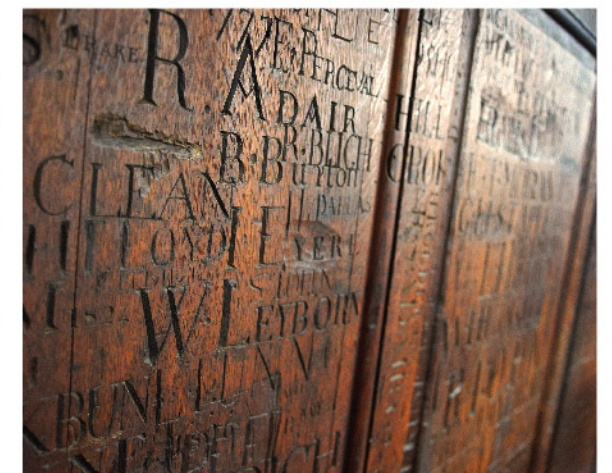
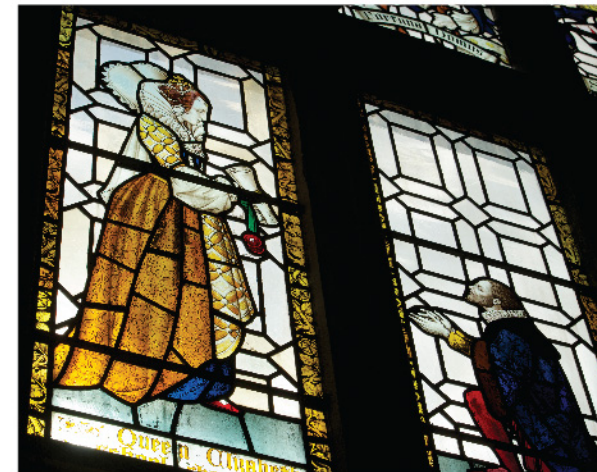
Harrow School in the UK is one of the world's most respected private educational institutions.

Founded in 1572 under a Royal Charter granted by Queen Elizabeth I, Harrow School has a well-deserved reputation for academic excellence, the 'House System' and outstanding holistic education.

Amongst the School's alumni are some of the most influential figures in world history, including Lord Byron, Winston Churchill, Jawaharlal Nehru, King Hussein, Lord Rayleigh and numerous influencers, inventors, artists and Nobel Laureates.



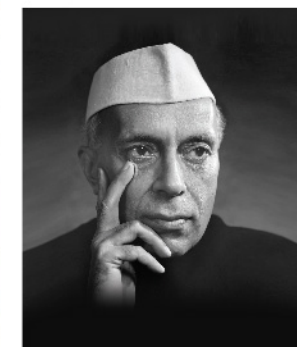
450 Years of World Leaders & Nobel Laureates



GEORGE GORDON BYRON



WINSTON CHURCHILL



JAWAHARLAL NEHRU

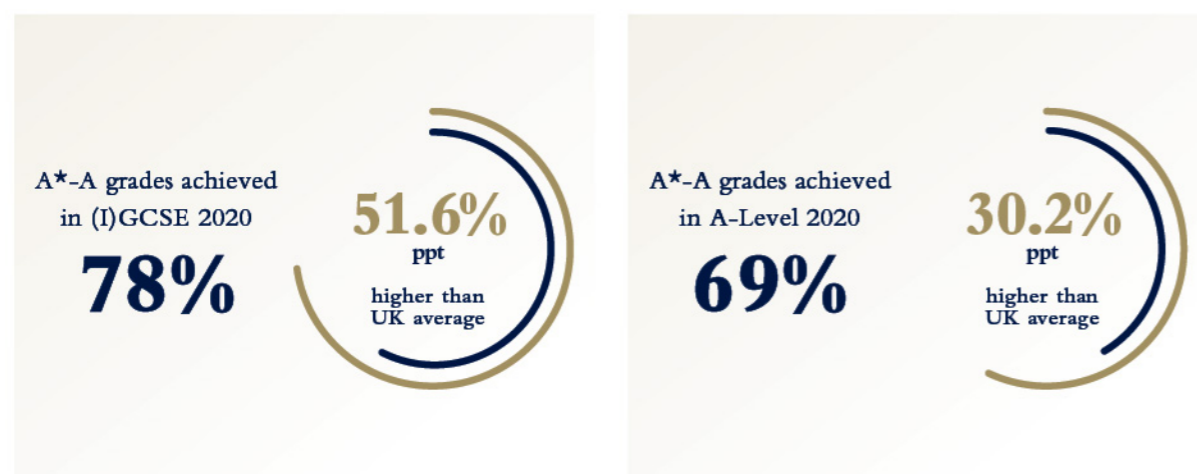


LORD RAYLEIGH

Academic Excellence

Harrow International Schools have built an exceptional track record of successes in university placement, based on outstanding grades and bespoke counselling support.

As a result, our alumni are studying at some of the world's best universities and are employed at some of the world's most prestigious companies.



University Placements		
The United Kingdom	Northern America	Pan Asia And China
<ul style="list-style-type: none"> ◆ University of Cambridge ◆ University of Oxford ◆ Imperial College London ◆ London School of Economics ◆ University College London ◆ University of Edinburgh ◆ University of St Andrews ◆ University of Warwick ◆ University of Nottingham ◆ Central Saint Martins 	<ul style="list-style-type: none"> ◆ Cornell University ◆ Boston University ◆ Carnegie Mellon University ◆ University of California, Santa Barbara ◆ Michigan State University ◆ New York University ◆ The University of British Columbia ◆ University of Toronto ◆ Berklee College of Music 	<ul style="list-style-type: none"> ◆ Peking University ◆ Tsinghua University ◆ University of Hong Kong ◆ Chinese University of Hong Kong ◆ Hong Kong University of Science and Technology ◆ University of Sydney ◆ Kyoto University ◆ Waseda University

Personalised guidance, privileged access

We ensure that all students achieve their academic potential, plus develop the personal attributes and build the experiences that improve their university and career opportunities. Each year many students graduate from the Harrow family of schools to take up places at Oxford, Cambridge and Ivy League universities, as well as the best universities in Asia.

While many schools adopt a 'one size fits all' approach to university guidance, all our HISs and HILAs offer a dedicated University Admissions and Careers Guidance Centre. Specialist tutors support the application process, giving individualised assistance to each student (and their parents).



Our Alumni



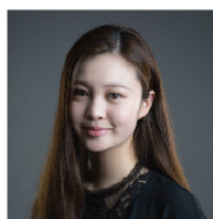
Our 'International Old Harrovians' (alumni) represent a growing network of outstanding individuals who exemplify the core values of a Harrow-branded education: Courage, Honour, Humility and Fellowship, and, above all, a desire to make a positive contribution to their communities.



Kerry Lui

Harrow Hong Kong 2017 Graduate
University of Cambridge

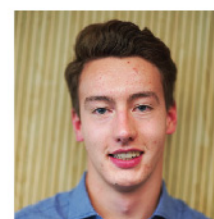
As Head Girl, Kerry has expanded her academic capacity and personal growth during her study in Harrow Hong Kong. She is now reading Law at University of Cambridge.



Tianyou Wang

Harrow Beijing 2014 Graduate
Oxford University

Tianyou joined Harrow Beijing in 2008 and graduated from Oxford after studying Fine Art. She will start on an exciting new project which combines art and real estate in Beijing.



David Stevenson

Harrow Hong Kong 2017 Graduate
Bristol University

As Head Boy, David achieved three A grades in A-level. He is currently at Bristol University studying Economics and Politics (BSc) with a view to pursuing a career in Finance.



Pearl Rojanapeansatith

Harrow Bangkok 2017 Graduate
University of San Francisco

Pearl graduated from Harrow Bangkok and is now studying at the University of San Francisco on a full golfing scholarship. She is a member of the university golf first team.



Isabella Kong

Harrow Hong Kong 2017 Graduate
University of Cambridge

Isabella achieved three A*s at A-level. She is currently at the University of Cambridge reading Geography, with an intention to pursue a Masters in Urban Planning, Public Policy, or in an environmental science related field.



Judy Jiang

Harrow Shanghai 2019 Graduate
University College London

Judy joined Harrow Shanghai as a founding International Harrovian and Harrow supported her throughout her IGCSE and A-level studies. She is now reading Physics at University College London.



Helen Huang

Harrow Beijing 2017 Graduate
The University of California,
Los Angeles (UCLA)

Helen graduated from Harrow Beijing and started her PhD in material chemistry at UCLA. She joins a research group that specialises in energy storage devices.



Shreya Karthik

Harrow Shanghai 2019 Graduate
University of British Columbia

Shreya joined Harrow Shanghai for A-level studies and obtained 3A*s at the exam. She is now studying at the University of British Columbia with an academic scholarship.

Our Bespoke Curriculum

English Focus with Strong Japanese and Chinese Programme

At Harrow Appi, students from across the world, Asian and Western, benefit from a unique programme of study. Inspired by Japan's reputation for innovation and technology, and building on our pedagogical expertise, the curriculum focusses on science, technology, culture and language.

An Innovation Hub sits at the heart of the school. Students engage in ambitious and challenging science, technology, engineering and mathematics (STEM) problem-solving projects through an enquiry-based learning approach.

Students also have the opportunity to develop fluency in English, Japanese and Chinese. Whilst most lessons will be taught in English, Harrow Appi graduates will be at ease conversing in any of these three focus languages. Japanese speakers will be able to access a bespoke Japanese language curriculum, delivered by expert teachers. An understanding of, and appreciation for, Japanese culture is compulsory for all students. This is achieved through lessons in Japanese culture, celebration of Japanese cultural events and through a deep respect for Japanese tradition woven into all aspects of the school. Mother-tongue Chinese speakers will have access to Chinese language lessons informed by, and referenced against, those taking place in our Harrow Innovation Leadership Academies. Non-native speakers will have access to Chinese and Japanese language resources and pedagogies developed across our International schools.



In short, the curriculum experience at Harrow Appi represents a unique opportunity for students to develop 21st century knowledge and skills. With lessons covering cutting edge science and technology, they will be academically challenged. Linguistically, they will be conversant in three of the world's most economical powerful languages: English, Chinese and Japanese. They will be ready for a life of leadership.

Prep Phase: Year 7 to 9 (age 11 to 13)

Modelled on the best practices of British Preparatory Schools and international Middle Schools, our Prep Phase is a blend of specialist-taught core subjects such as English, Japanese, Mandarin, Mathematics, Science and Coding, with additional subjects taught including: Art, Coding, Drama, Design Technology, Geography, History, Music and Physical Education.

The Senior Phase: Year 10 to 11 (age 13 to 16)

Designed to build on the knowledge and skills developed in the Prep Phase, our Senior School curriculum is academically demanding, focusing students on national and international public examinations. Building towards their IGCSE examinations (usually taken in Year 11), students are intellectually stretched. Subjects taught include: Art, Biology, Chemistry, Computing, Design Technology, Drama, English, Geography, History, Languages (including Japanese), Mathematics, Physics and Physical Education.



Outstanding Teaching Quality



The Sixth Form: Year 12 to 13 (age 16 to 18)

Following IGCSE examinations, students move into the 'Sixth Form' Phase of the School and prepare themselves for success at university. They complete a two-year suite of A-Level courses, regarded as the gold standard of British education and recognised worldwide.

The Sixth Form years are both challenging and exciting. Students have the opportunity to specialise in subjects they particularly excel at and study these areas to an advanced academic level. Many students complete an 'Extended Project Qualification' (EPQ) which allows for the development of research skills and the exploration of a topic of special interest in even greater depth. Students also have an opportunity to contribute to the management and leadership of the school by taking on key student positions of responsibility such as Prefect, Senior Prefect, Head Girl, Head Boy, Student Academic Leadership Team and the Student Council.



Quality education is always a reflection on the quality of educators and instructors.

Our outstanding Education Team provides expert support to the Heads, Teachers, senior and middle managers, and educational support staff in our schools. Drawing on decades of leadership experience in the UK and internationally, they lead professional development and quality assurance programmes across our family, informed by the latest thinking in educational best practice. Comprised of senior education professionals, including successful school Heads, government advisors and influential educational thinkers, the team takes a research-based, progressive approach that drives excellence in our schools.

The family of Harrow-branded schools has a worldwide reputation for the high-quality education, teacher engagement, student attainment and parental satisfaction. We maintain, these standards by recruiting only the very best teachers and school leaders. All our educationalists are highly qualified, many holding advanced degrees and other additional certifications. The majority are recruited from the UK, plus Australia, New Zealand and other English-speaking countries with high education systems.

As a renowned family of schools we are privileged to be able to select from a pool of exceptionally talented teachers who want to work for Harrow. Where possible, our teachers are interviewed at Harrow School in the UK where they have a positive first experience of the family. A rigorous recruitment process is followed, with only the very best candidates being employed. In addition, our safeguarding and background checks are exceptionally thorough meaning we are confident all adults in our school are safe to be close to our students.



Our Holistic Education



A Harrow-branded education is holistic. Our students are well-rounded and confident, active and engaged - in the classroom and beyond. Our extensive Co-Curricular programme broadens horizons, instils a sense of adventure, and fosters leadership, teamwork and resilience. The possibilities for learning are endless.

Our **Harrow Sport** programme gives students the opportunity to test and extend themselves. By representing the school across a range of sports and physical activities, students develop courage and resilience - learning to become team players. Developing a lifelong love of movement, students enjoy better physical, emotional and mental health.

The **Harrow Talent** programme challenges students to extend their comfort zones. Through the expressive arts, through debating, and through public speaking, students build self-confidence, creativity, courage and humility.

Our **Super Curriculum** encapsulates all those activities that foster academic endeavour beyond the measurable outcomes of examination results. It includes (but is not limited to) wide and habitual reading, extended project work, debate, public speaking, research, competitions, lectures and study trips.



The **Harrow Service** programme is a fundamental aspect of a Harrow-branded education. In keeping with our mission, every student, even the very youngest, is provided with opportunities to make a positive contribution to the community. We understand that with privilege comes responsibility; we must be socially, courageously and empathetically concerned for others.

Our **Boarding Community** supports the development of age-appropriate independence, fostering lifelong friendships and fellowship.

This holistic approach ensures that academic excellence is supported by an extensive range of activities, societies, events, and service to the community. Students develop the strength of character to excel in a dynamically evolving world, preparing them for a high-achieving and successful futures.



Our House System



The Heart of Harrow

A key strength of the House system is the vertical integration of different aged pupils. This creates a 'family' unit within which responsibilities are assigned to older students to care for and support their younger peers.

The House system is the most distinctive characteristic of a Harrow-branded education and is central to the school's culture and success. The development of House communities is characterised by strong bonds and support networks within each House. The House Master or Mistress and Form Tutor knows each member of the House extremely well, allowing for close monitoring of academic performance as well as pastoral support. Therefore, if and when there is a problem, the student will swiftly receive well judged, individualised and effective support to get back on track.



Our Boarding Community



Be a Boarder, be more Harrovian

Being a Boarder is the most authentic way to experience a Harrow-branded education; after all, Harrow School in the UK has been offering a boarding-only education for centuries.

Boarders benefit from being part of a community, from learning to live alongside others, and from having world-class facilities right on their doorstep.

All boarders can choose from a range of additional sporting, academic, creative and wellbeing activities. These sessions provide boarders with further opportunities to access the school's facilities, develop new and existing skills, support their mental health, and to interact with peers from other Houses - all the while being continually supported by faculty members.

To further develop boarding students potential, we run additional supervised study sessions and provide focused academic support. Our younger students are offered language and Mathematics support, our older students can request tuition in any of their IGCSE or A Level subjects. In all cases, fully qualified teaching staff provide the additional lessons - all included within the boarding fee.

Being a boarder is the best way to become a true Harrovian.



Personalised Support, Pastoral Care

Personalised Support, Pastoral Care

We recognise that every child is unique, with individual needs and requirements.

Through our pastoral systems, we offer each student personalised care, support and guidance. Small class sizes and the House system ensure that every student is known by name, and the teachers understand the students' strengths and areas for improvement.

This personalised pastoral support is centred on the 'home room' in the Lower School and the 'House' in The Upper School.

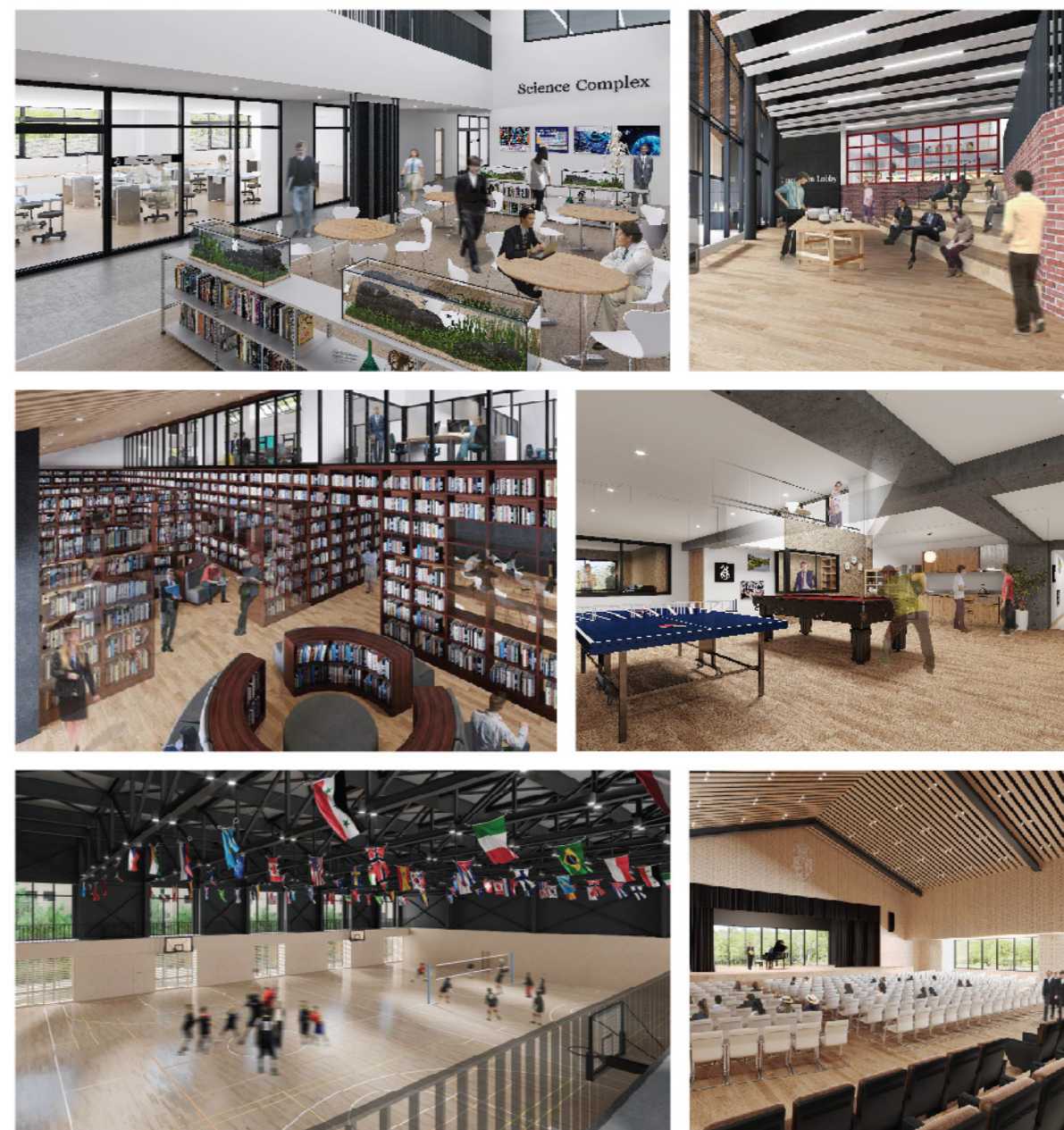
This personal attention ensures that we also know about the student's life outside of school: we celebrate their successes, we are supportive and effective when there are difficulties and we are expert and prepared for life's challenges.

Pastoral care underpins our students' entire experience of Harrow and results in safe, academically successful and fulfilled students. We work closely with parents and carers to support every child on their journey to successful adulthood.



Our World Class Facilities

Harrow International School Appi boasts state-of-the-art facilities in a stunning setting. The design is based on accumulated expertise across the Harrow International group and incorporates the best of contemporary school design with access to technology and nature.



How to Find Us



Narita Airport	JR Narita Express 1 hr	Tokyo	Shinkansen "Hayabusa" 2 hr 10 min	Morioka	Bus 50 min	<p>HARROW INTERNATIONAL SCHOOL APPI JAPAN</p>
Haneda Airport	Train 25 min				Train "Hanawa" 50 min	
Nagano by Hakuba	Shinkansen "ASAMA" 1 hr 30 min	APPI Kogen Station				
Sendai Airport	Train 20 min	Sendai	Shinkansen "Hayabusa" 40 min	Bus		
Kansai Airport	Bus 1 hr 10 min	Itami	Airplane 1 hr 25 min	Bus 1 hr 15 min		
Niseko Area	Bus 3 hr	New Chitose	Airplane 1 hr	Taxi 1 hr 40 min		
				Iwate Hanamaki Airport		

About Us

Asia International School Limited is a leading provider of world-class K12 education in Asia. Through our wholly owned subsidiary Harrow International Management Services Limited and affiliates, we operate Harrow International Schools, Harrow Innovation Leadership Academies and Harrow Little Lions Early Years Centres.

In the academic year of 2020/2021, the Group is operating approximately 24 Harrow-branded schools and early years centres in Asia including Thailand, China and Hong Kong SAR.



* Plan as of October 2020

Asia International School Limited

35/F, Office Tower,
Convention Plaza, 1 Harbour Road,
Wan Chai, Hong Kong SAR
www.harrowschools.com

Follow us

Harrow International AISL

HarrowInternational